

# **Sri A.S.N.M. Government College (Autonomous)**

**(NAAC Re-accredited by 'B' Grade with 2.61 CGPA)**

**Palakol, West Godavari District – 534260**

## **FEEDBACK ANALYSIS - EMPLOYER 2021-2022**

Feedback on curriculum is a regular phenomenon in Sri A. S. N. M Government College as it aids in the quality sustenance and enrichment of the curriculum. The college updates the curriculum periodically by closely adhering to the policies and guidelines issued by the concerned regulatory authorities.

Besides catering to the needs of the students and the demands of the employers, frequent meetings are convened wherein the Management, Controllers of Examinations, Academic Coordinator of Curricular Affairs, IQAC Coordinator and the Heads of the Departments discuss Curriculum Based issues. Structured Feedback on individual courses and the syllabus of respective departments are collected semester wise from Students, Teachers, Employers and Alumni. The collected feedback is analyzed by each department. Based on the stakeholders' suggestions and recommendations, the curriculum is designed, revised and new skill-oriented courses are introduced from time to time in the Board of Studies.

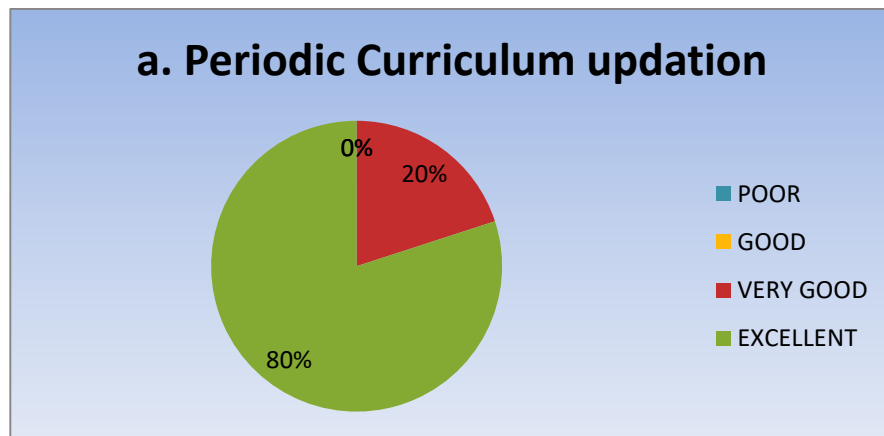
The Draft Syllabus is revised in the Board of Studies and finalized. The suggestions of the University Nominees, the Subject Experts, Industrialists and Alumni are incorporated and the Action Taken Report is presented in the next Board of studies. The curriculum is then approved in the Academic Council and the Governing Body. The Suggestions brought forth by the distinguished members of the Academic Council and the Governing Body are realized and Action taken Report are presented and documented in the minutes of the Subsequent Academic Council and Governing Body.

Structured Feedback on individual courses and syllabus is obtained from the students and course teachers the end of each year; from the alumni during the Annual Alumni Meet and from the Industrialists and Employers during formal meetings. The stakeholders respond to Questionnaires with 09 questions on syllabus on the scales as stated herein:

 Excellent	- E
 Very Good	- VG
 Good	- G
 Poor	- P

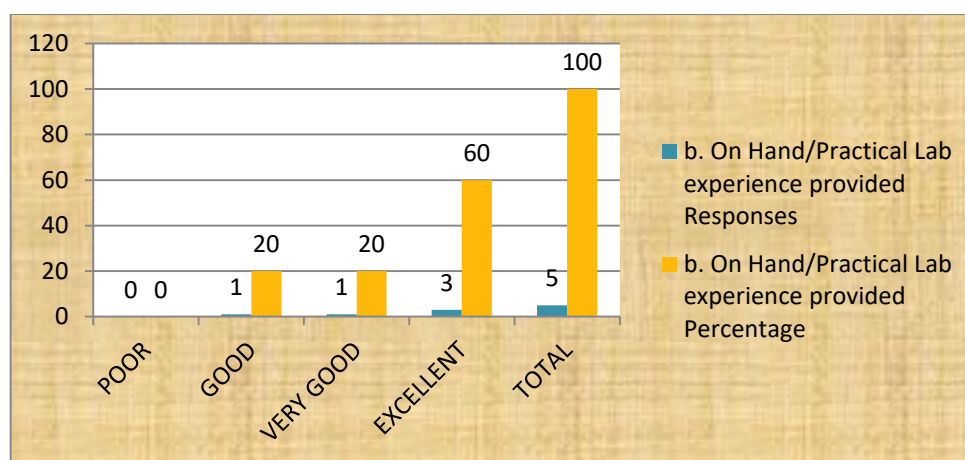
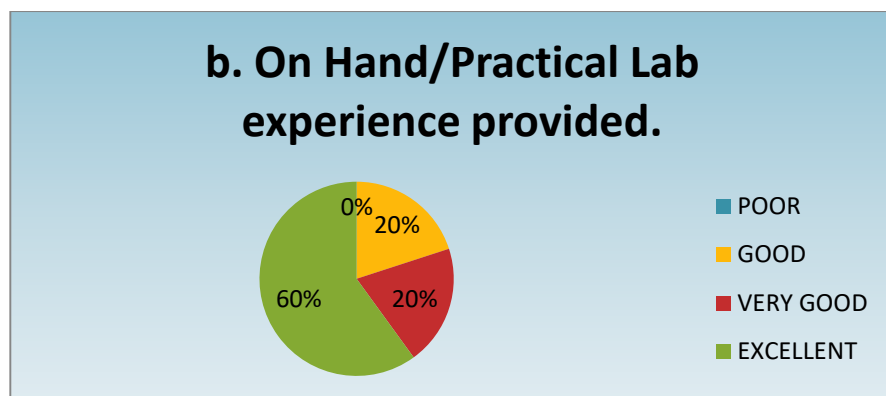
**Total Number of Respondent: 5**

a. Periodic Curriculum updation		
Options	Responses	Percentage
POOR	0	0
GOOD	0	0
VERY GOOD	1	20
EXCELLENT	4	80
<b>TOTAL</b>	<b>5</b>	<b>100</b>



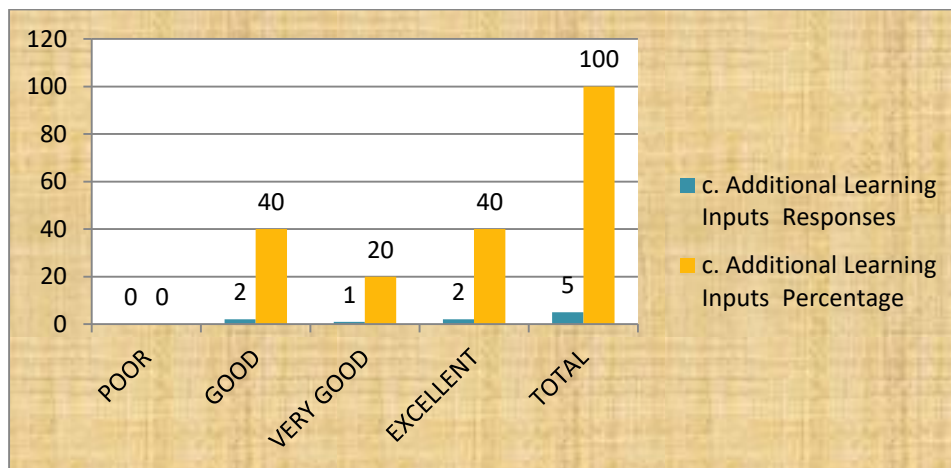
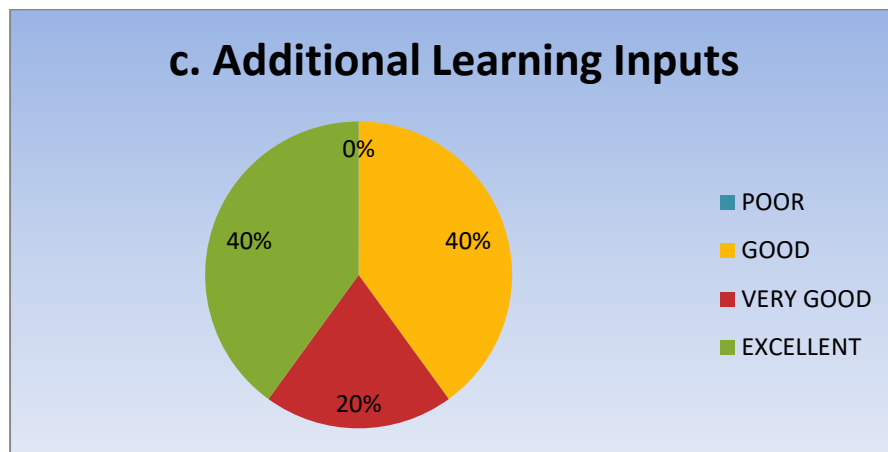
80% of the employer expressed the curriculum updation is Excellent in need based, 20% of employer given very good and nobody expressed Unsatisfactory in this point.

<b>b. On Hand/Practical Lab experience provided</b>		
Options	Responses	Percentage
POOR	0	0
GOOD	1	20
VERY GOOD	1	20
EXCELLENT	3	60
<b>TOTAL</b>	<b>5</b>	<b>100</b>



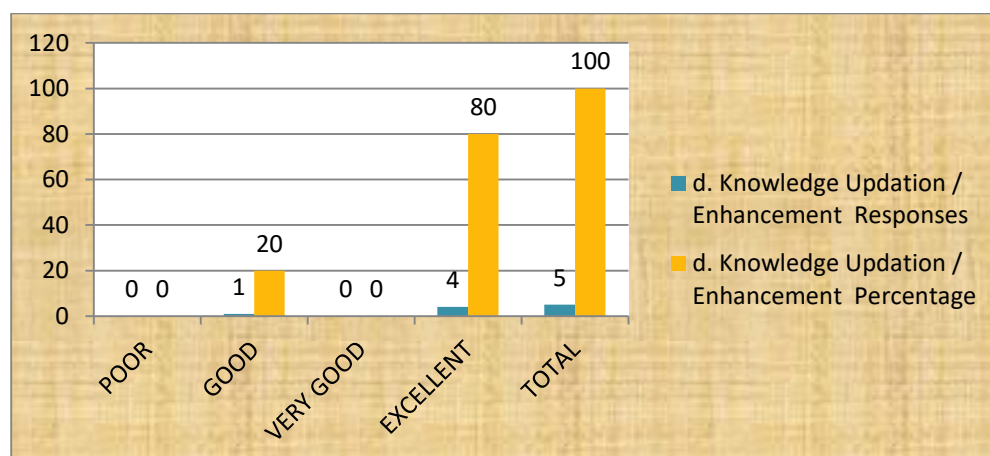
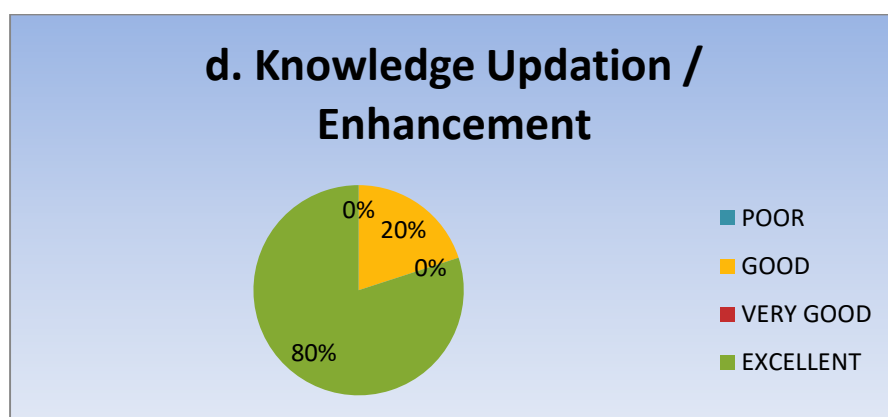
60% expressed excellent regarding practical experience and Lab facilities available, 20% of employer expressed very good, 20% of them given good rating and no one given poor rating in this point.

c. Additional Learning Inputs		
Options	Responses	Percentage
POOR	0	0
GOOD	2	40
VERY GOOD	1	20
EXCELLENT	2	40
<b>TOTAL</b>	<b>5</b>	<b>100</b>



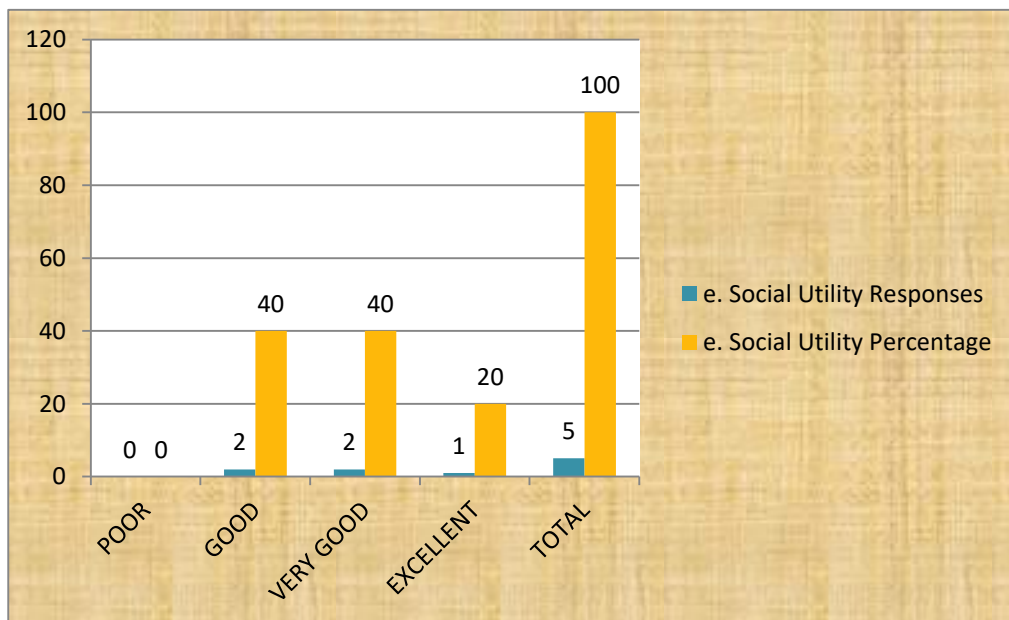
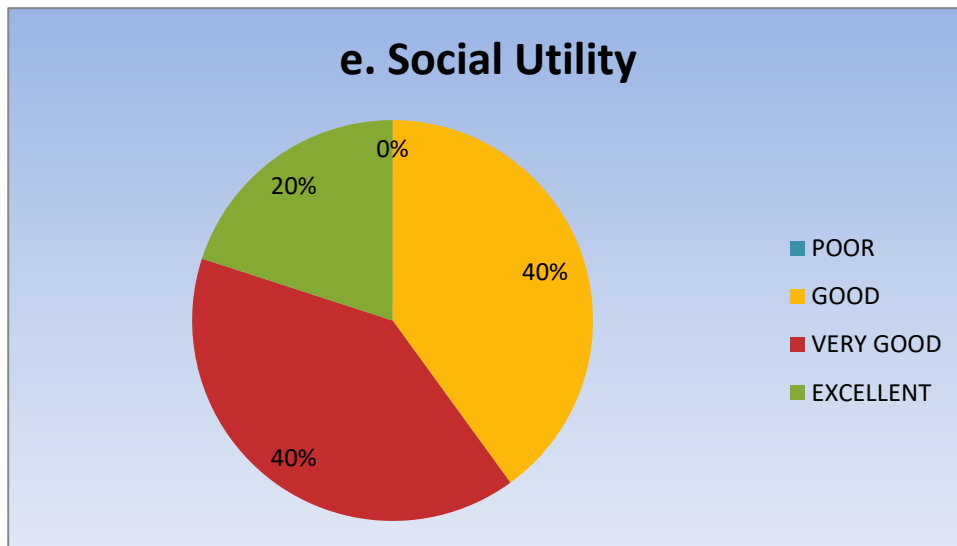
40% of employer given excellent rating additional inputs provided, 20% of them given very good, 40% of employer given good rating and no one given poor rating to this point.

d. Knowledge Updation / Enhancement		
Options	Responses	Percentage
POOR	0	0
GOOD	1	20
VERY GOOD	0	0
EXCELLENT	4	80
<b>TOTAL</b>	<b>5</b>	<b>100</b>



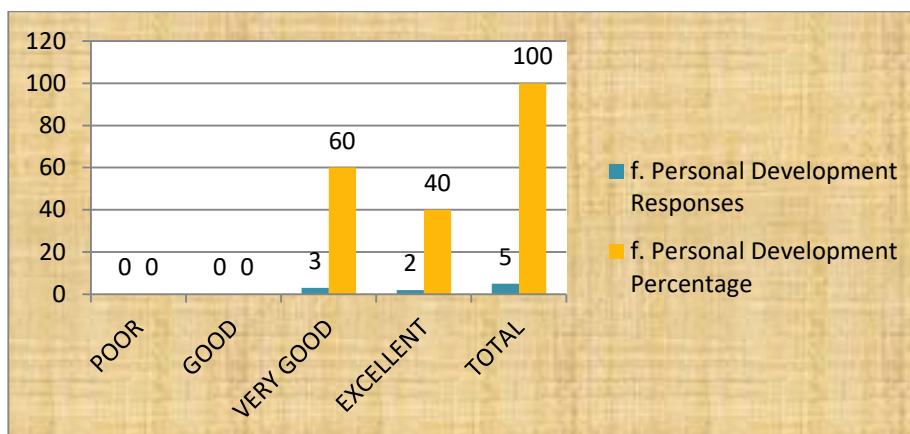
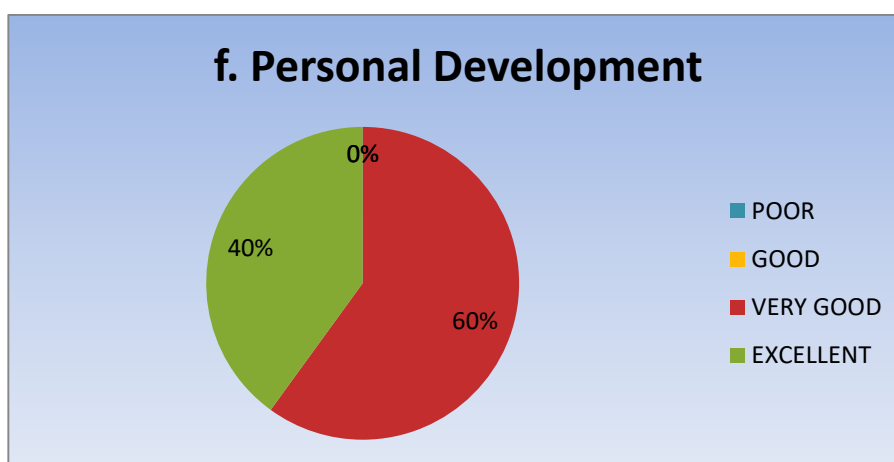
Awareness on knowledge updation and enhancement in specific field appreciated 80% said Excellent, 20% as good and no one can say unsatisfactory.

e. Social Utility		
Options	Responses	Percentage
POOR	0	0
GOOD	2	40
VERY GOOD	2	40
EXCELLENT	1	20
<b>TOTAL</b>	<b>5</b>	<b>100</b>



They encouraged various activities for the students 20% of them given excellent rating, 40% are very good rating, no one given poor rating.

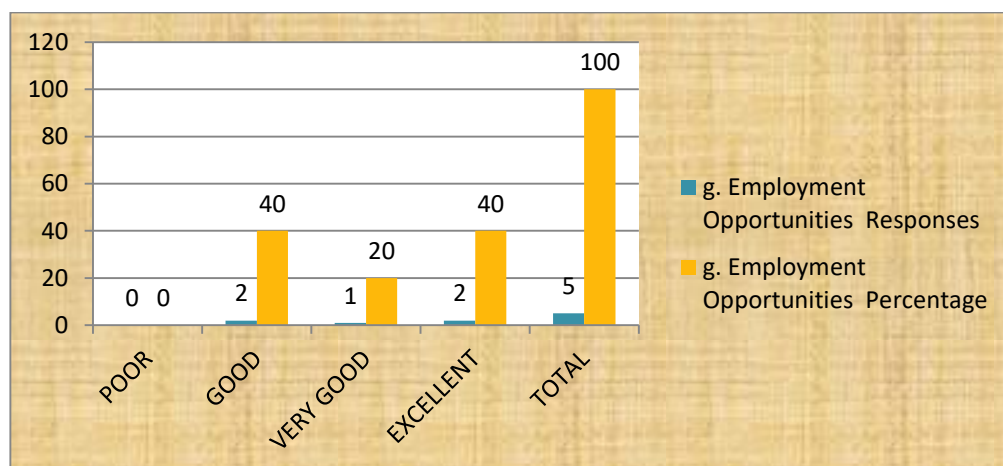
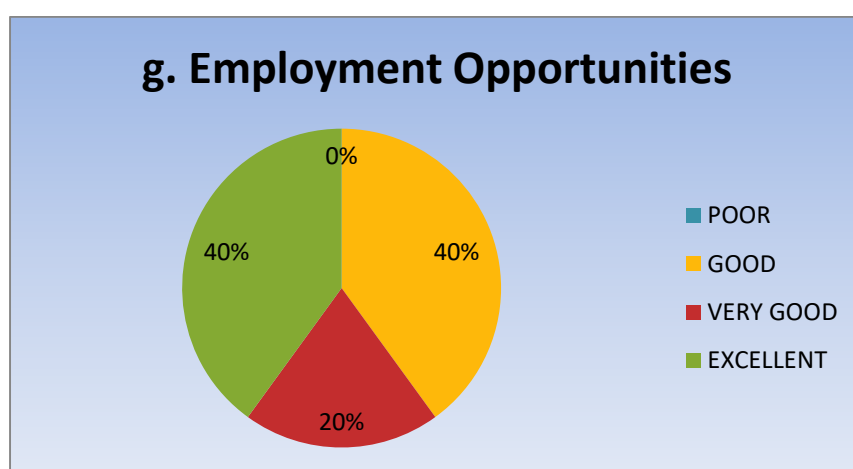
f. Personal Development		
Options	Responses	Percentage
POOR	0	0
GOOD	0	0
VERY GOOD	3	60
EXCELLENT	2	40
<b>TOTAL</b>	<b>5</b>	<b>100</b>



40% of employer given excellent rating regarding activities on personality development for the students, 60% of employer given very good rating and no one given poor rating to this point.

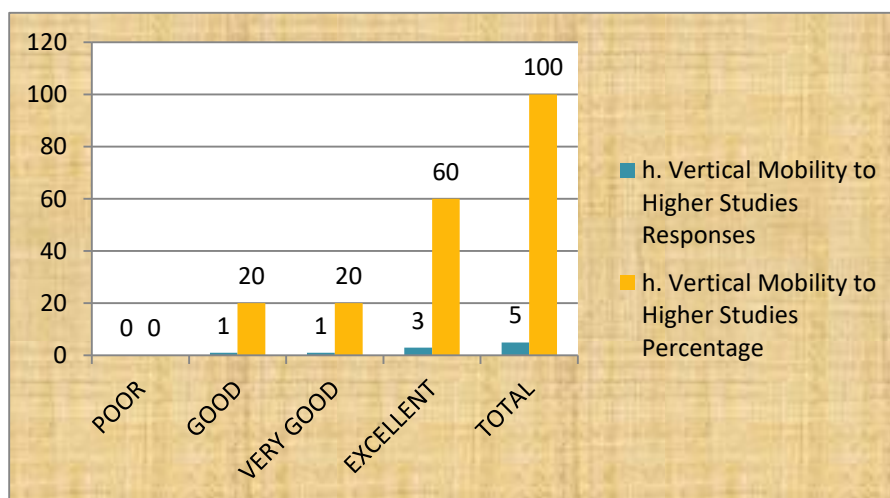
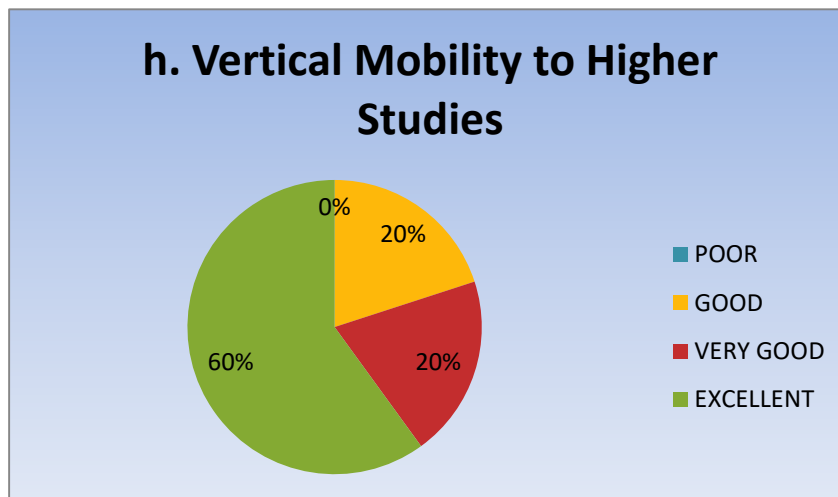


g. Employment Opportunities		
Options	Responses	Percentage
POOR	0	0
GOOD	2	40
VERY GOOD	1	20
EXCELLENT	2	40
<b>TOTAL</b>	<b>5</b>	<b>100</b>



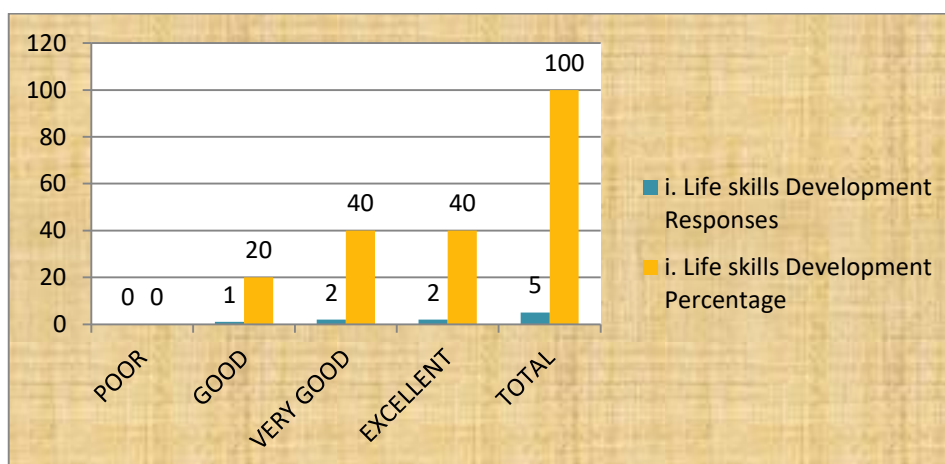
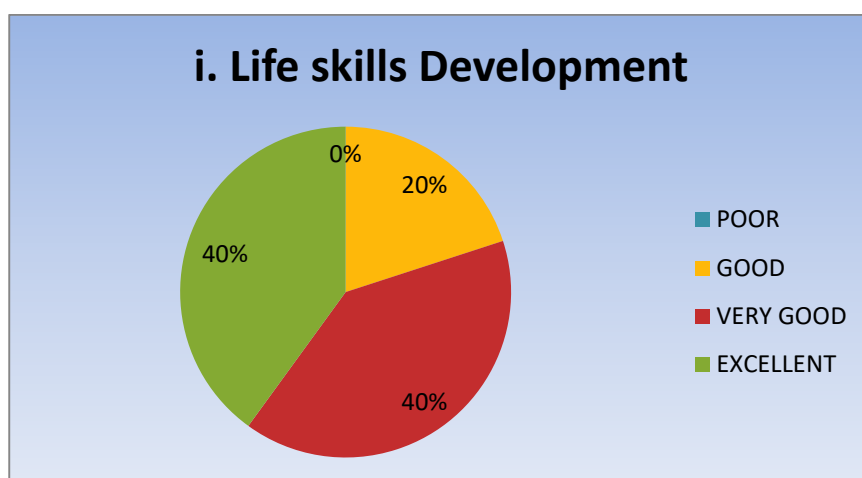
20% of stake holders given excellent rating regarding job opportunities to the students, 20% of employer given very good rating, 40% given good rating and no one given unsatisfactory for this point.

h. Vertical Mobility to Higher Studies		
Options	Responses	Percentage
POOR	0	0
GOOD	1	20
VERY GOOD	1	20
EXCELLENT	3	60
<b>TOTAL</b>	<b>5</b>	<b>100</b>



Most of the employer suggested to do higher education by the students. 60% of employer given excellent rating to this point and no one given as poor rating to this point.

i. Life skills Development		
Options	Responses	Percentage
POOR	0	0
GOOD	1	20
VERY GOOD	2	40
EXCELLENT	2	40
<b>TOTAL</b>	<b>5</b>	<b>100</b>



Most of the employer they felt happy with life skill courses provided by the collegiate education. 40% of employer given excellent rating, 40% given very good rating, 20% given good rating and no one given poor response.